



1891 Pinal County Courthouse Restoration

PICTORIAL OF OUR LEGACY

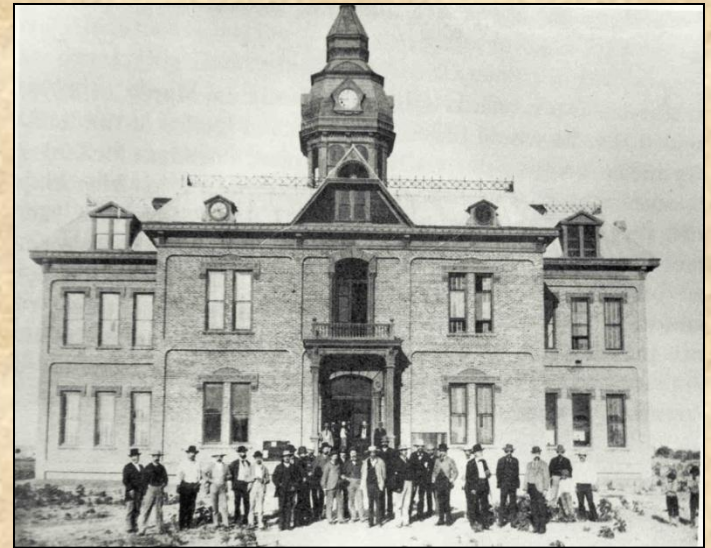
THE COURTHOUSE RESTORATION PROJECT HAS BEEN
RECOGNIZED AS AN OFFICIAL ARIZONA CENTENNIAL LEGACY
PROJECT BY THE ARIZONA HISTORICAL ADVISORY COMMISSION.

***The 2nd* 1891 Pinal County Courthouse**

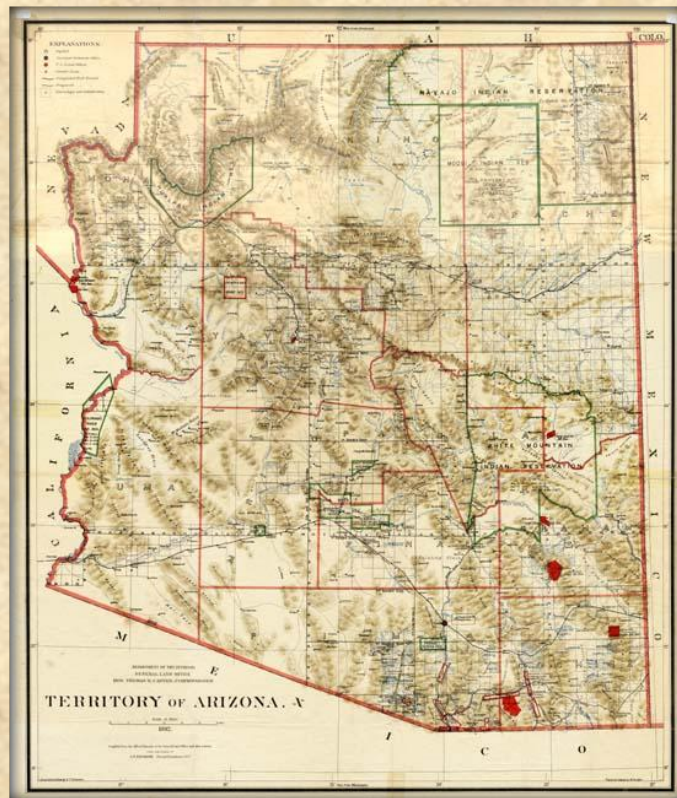
Pinal County Arizona has many historical sites from ancient Indian ruins and petroglyphs to many buildings dating back to the 1800's. Florence, the county seat, has been a town with a colorful background of gunfighters, ranchers, unsavory characters, and lawmakers who have etched their names in history.

The 1891 Courthouse has taken its place in history also. This Pictorial has been assembled to provide the public with a glimpse into its past and the dedication of many to preserve it for future generations to enjoy.

- Historical Events
- Inspirational Aspects
- Previous Renovations
- Rehabilitation
- Renovation & Construction Phase
- Conceptual Renderings
- Our Legacy Lives On



2nd Pinal County Courthouse circa 1890s.



HISTORICAL EVENTS



HISTORY THAT SHAPED PINAL COUNTY

- **1866** – Florence is established from Levi Ruggles' land patent.
- **1875** – Pinal County is established from portions of Maricopa and Pima counties. Florence becomes the county seat.
- **1877** – The 1st Pinal County Courthouse is constructed. Currently known as McFarland State Park.
- **1880** - The arrival of the railroad in Tucson, and soon after in Maricopa Wells, brought Eastern, Midwestern, and Californian building materials, technology, and styles to Pinal County, making its architecture and lifestyle more American.



<http://www.pr.state.az.us/Parks/MCFA/gallery.html>



EVENTS IN ARIZONA HISTORY WORTHY OF PRESERVING THE 1891 COURTHOUSE

- **1879** – City of Casa Grande, originally called Terminus because it was the end of the rail line, is founded. Jere Fryer and Pauline Cushman, a Civil War Union Spy, meet and move to Casa Grande. They later marry and operate a hotel. Jere Fryer will later become Pinal County Sheriff. Establishment of Casa Grande marks the beginning of rail transportation to the area.
- Beginning about **1885** American-Victorian style buildings, often ornately detailed and generally constructed with red brick walls and steeply pitched roofs, were being constructed in Florence.
- **1888** – The "Duel at the Tunnel Saloon" takes place in Florence between ex-sheriff Pete Gabriel and his ex-deputy Joe Phy. It is the most notorious gunfight in Florence history. Both Gabriel and Phy are shot. Gabriel recovers and lives 10 more years. Phy dies from his wounds. The shooting reportedly stemmed from jealousy over a woman.



Pauline Cushman

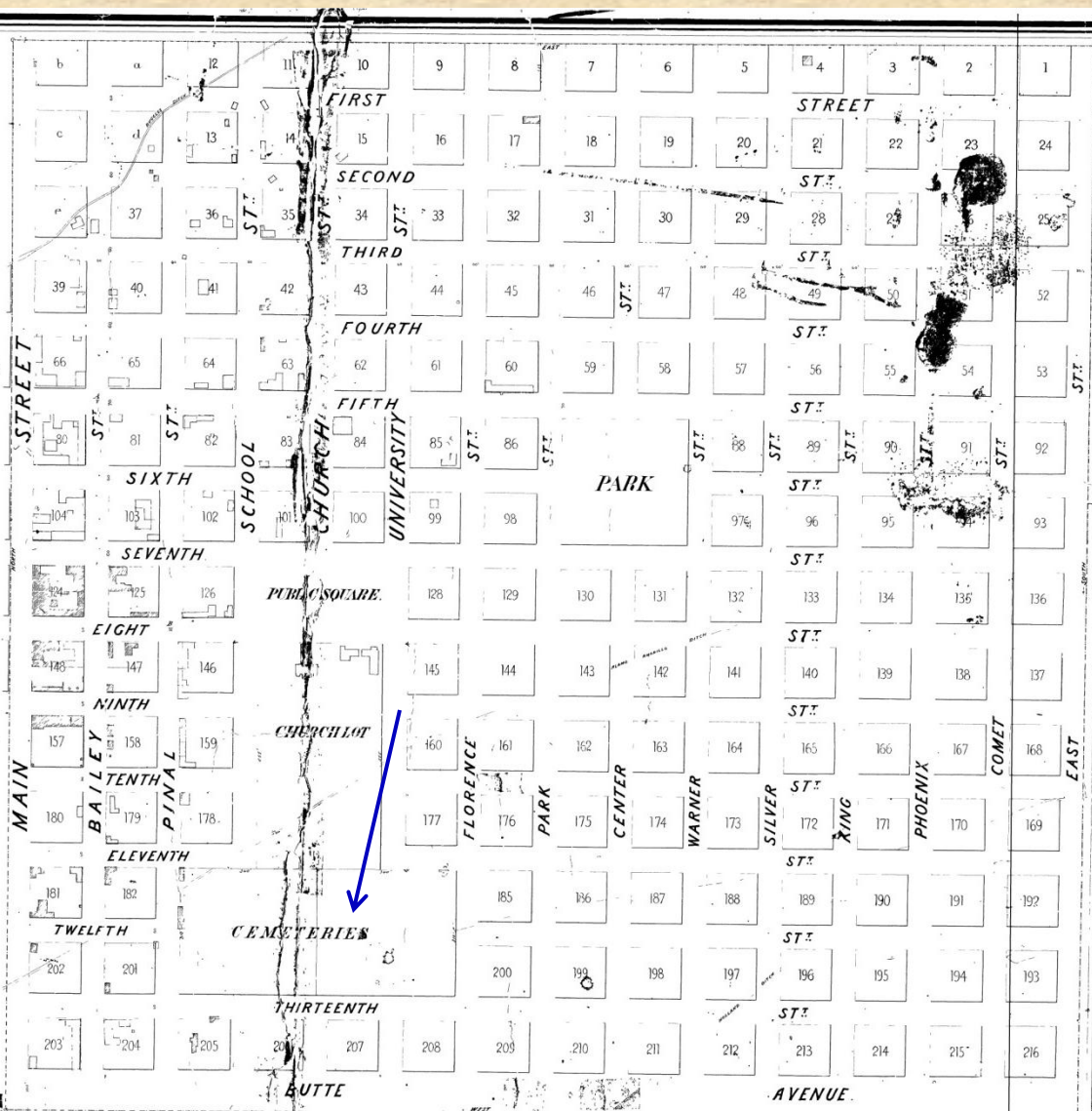


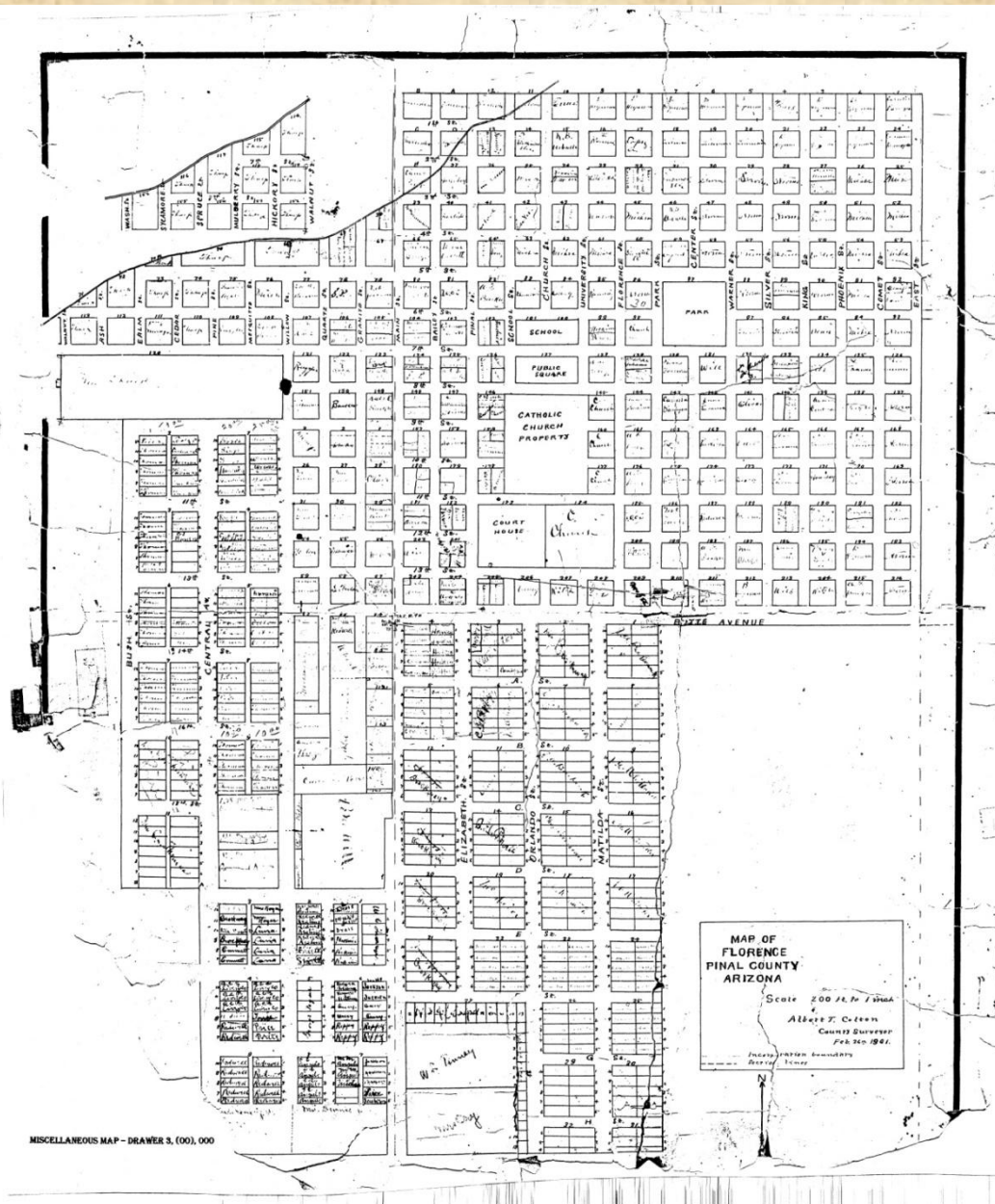
PINAL COUNTY AR. TX

Reference

o. Corners of Terrace, charred redwood Post 4 x 4 inches square 2 feet long 6 inches under ground

Map circa Oct 1882





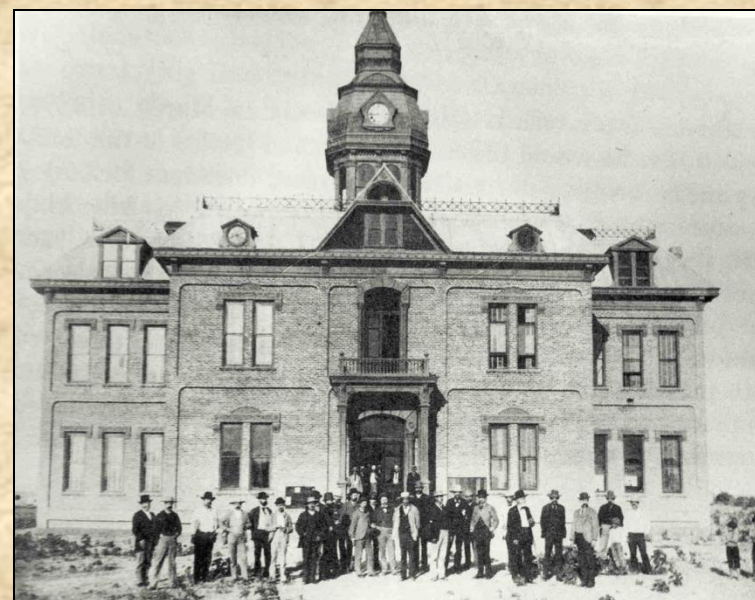
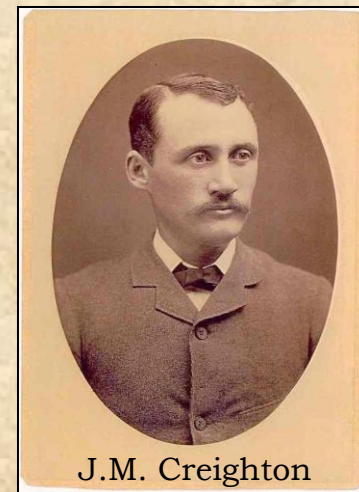
On **February 1, 1890** Ed Bouvaille has been awarded the contract for the removal of the bodies from the old cemetery. Any persons having friends and relatives buried therein can have the removal by Mr. Bouvaille on very reasonable terms.

On **February 22, 1890** it was noted that among the unknown bodies removed from the old cemetery, and there are many of them, one was exhumed on Tuesday that was mummified. It was rigid and was stood up for identification but no one seemed to know him, although some traced a slight resemblance to Bill Fenton, a swamper for Dick Hastings' freighting team, who died in the hospital several years ago. It has sandy hair and beard, wore a gray wool shirt with a red necktie and blue overalls. The body was hard and the only evidence of decay was the absence of a portion of the nose.

Ed Bouvaille has about completed the removal of the bodies from the old cemetery and is prepared to contract for the removal of such others from the Catholic cemetery as their friends and relatives may desire. Superintendent Behan of Territorial Prison at Yuma, while on a wild carousel, tried to drive his buggy into the railroad hotel at the place and later on he sent several shots from his revolver through the large mirror behind the bar and committed several disgraceful acts. Get your pictures take at Bushman's photograph tent.

By **March 8, 1890** all the squatters upon the cemetery lots have compromised their claim and no obstacles now remain in the way of building the courthouse thereon.

- **Mar 1, 1890** – JM Creighton, architect, is hired to design 2nd courthouse at total cost of \$34,765.
- **Sept 20 1890** – The great dome of the new courthouse reaches an elevation from which the smoke of the locomotive at Casa Grande can easily be seen. Metallic roofing is put on by A Weiffenbach.
- **Feb 2, 1891** – 2nd Courthouse is completed. Total 15,000 sf. Cost of construction \$29,000. The jail was an additional \$5,765. Upon opening in 1891, the courthouse contained offices for the Assessor, Recorder, Treasurer, and Board of Supervisors. The Sheriff's Office and jail occupied the back end of the first floor. A clock tower was constructed but there wasn't enough money to finance the installation of working clocks. Instead, clock facings were added with the time set at 11:44 a.m.



2nd Pinal County Courthouse circa 1890s.

- **June 4, 1899** Pearl Hart is jailed in the courthouse for robbing a stage coach.

Outlaw Lady



PEARL HART





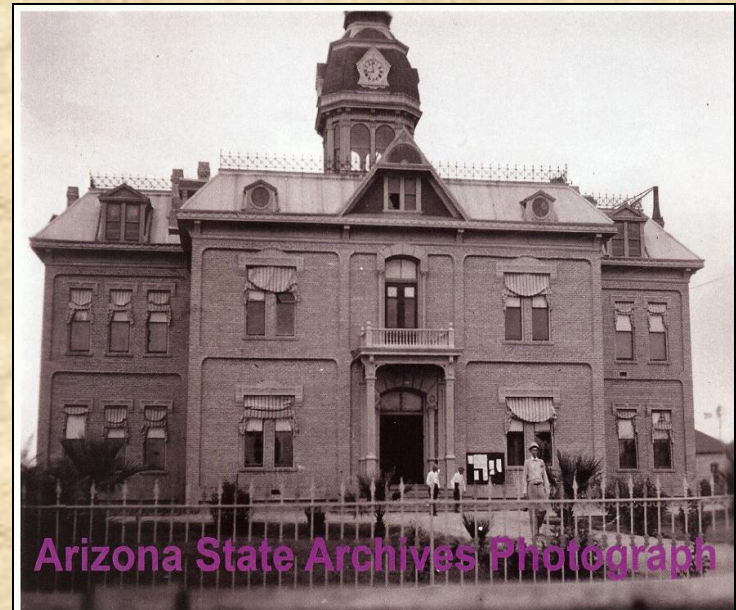
1900



1911

- **July 1, 1905** *Arizona Blade and Florence Tribune* J.M Bernal has completed the painting of the courthouse. The building was given two coats of paint and a close inspection shows that the work has been well done. The bright and finished appearance demonstrates that Mr. Bernal is a conscientious workman, even on a county contract and understands his business. He was assisted in the painting by Ygnacio Moreno. It is seldom that a mistake is made when county contracts are given to local people and the Board of Supervisors have certainly not erred in this instance.
- **1908** – Florence is incorporated.
- **1909** – The Arizona Territorial Prison is moved from Yuma to Florence. Florence is still recognized as being the home of the Arizona State Prison.
- **1912** – Arizona officially becomes a state on Valentine's Day.
- In **October 1913**, seventy-five inmates from the prison in Florence arrived by train in Bisbee and were hauled over the pass in mule-drawn wagons to the prison camp in Tombstone Canyon. Prison road gangs built the highway over the mountain pass between Bisbee and Tombstone. The inmates also improved a stretch of the Douglas Highway, and built a bridge at Fairbanks over the San Pedro River. A concrete monument commemorates the completion of the road. Today the road is used mostly by hikers, joggers and cyclists.

- **December 11, 1915** – Lesalter & Kibby, of Phoenix, were approved by the Board of Supervisors to install new vaults and make structural changes to the building. Fire proof vaults will be built inside the extensions. Alterations in the building and vaults will cost the county between \$4550 and \$5000.
- **October 7, 1916** – Snell & Boring put the finishing touches on the courthouse. Vault doors are on and the hardwood floor was being laid in the room formerly used by the clerk of the court. Upon completion the room will be used as the county law library.
- **1917** – The first and only two story additions were made to the northwest and southwest corners of the courthouse transforming the cruciform shaped building to a “T” shape.
- **1925** – Ernest W. McFarland is elected Pinal County Attorney. He served in this capacity until 1930.
- **1926** – Coolidge Dam is dedicated, increasing agricultural opportunities in Pinal County. Humorist Will Rogers attended the dedication, takes one look as the Gila River is filling the storage dam and says, “If that was my lake, I’d mow it.”



Arizona State Archives Photograph

1913



COOLIDGE DAM ALONG U.S. 180 - ARIZONA





EVA DUGAN

In **1930** [Eva Dugan](#) received a sanity hearing in the courthouse after being convicted of murder. She was deemed sane and put to death by hanging. Her head came off during the execution. Death by hanging was immediately discontinued. She remains the only woman executed in Arizona. Ernest McFarland served as the attorney for the prosecution.

Prisoner
07174 & 007435

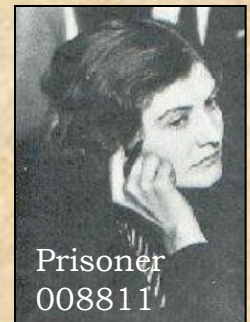


Administration Building at Arizona State Prison in Florence (circa 1930's). At the time of this photograph, Arizona law provided for death by hanging in capital cases. This changed after Eva Dugan's demise.



WINNIE RUTH JUDD

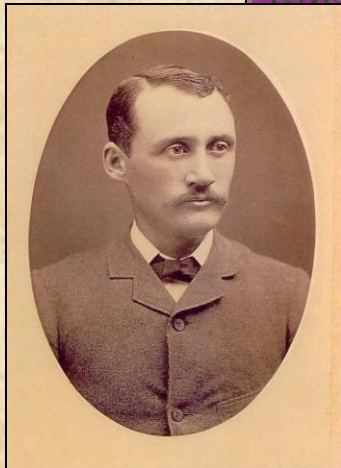
In **1933** [Winnie Ruth Judd](#) received a sanity hearing in the courthouse after a double murder conviction. She was represented by McFarland. She was deemed insane and was not executed. Her trials and tribulations become a footnote in Arizona political history.



Prisoner
008811



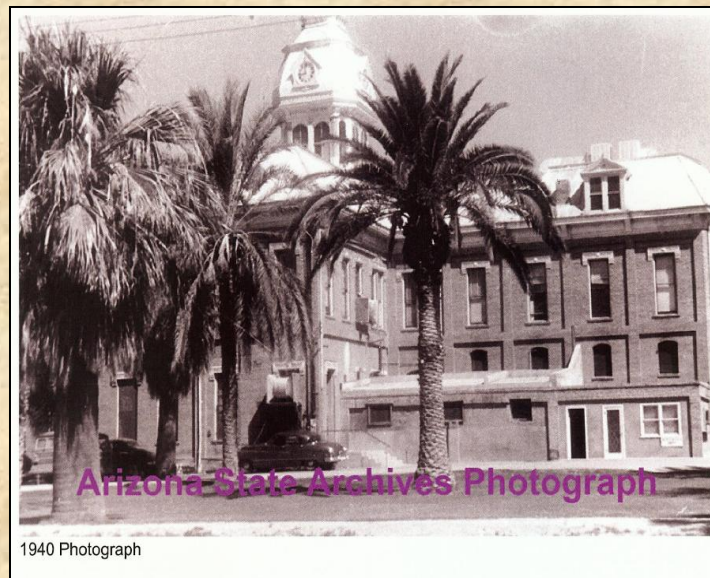
Ernest W McFarland



J.W. Creighton

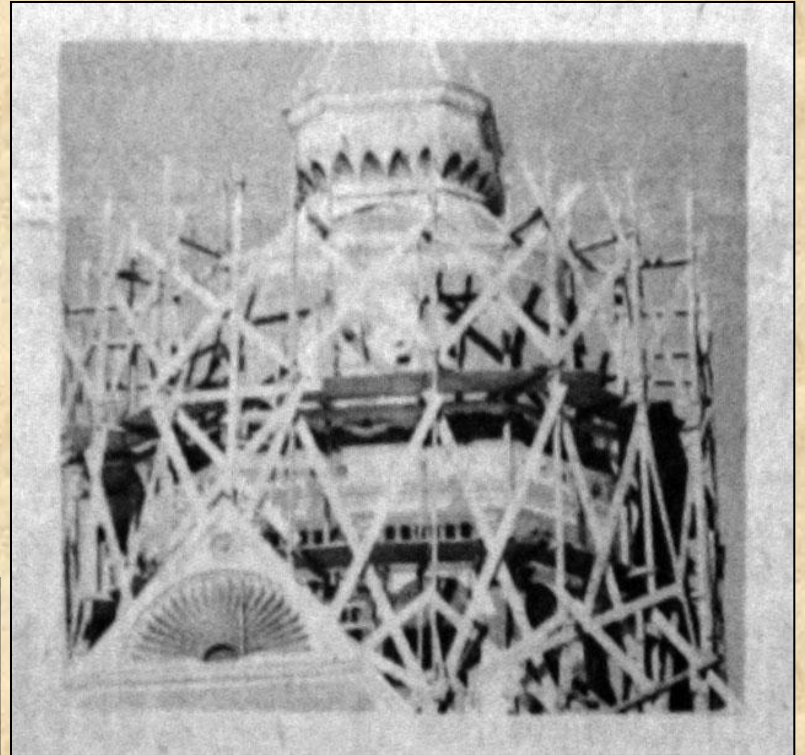
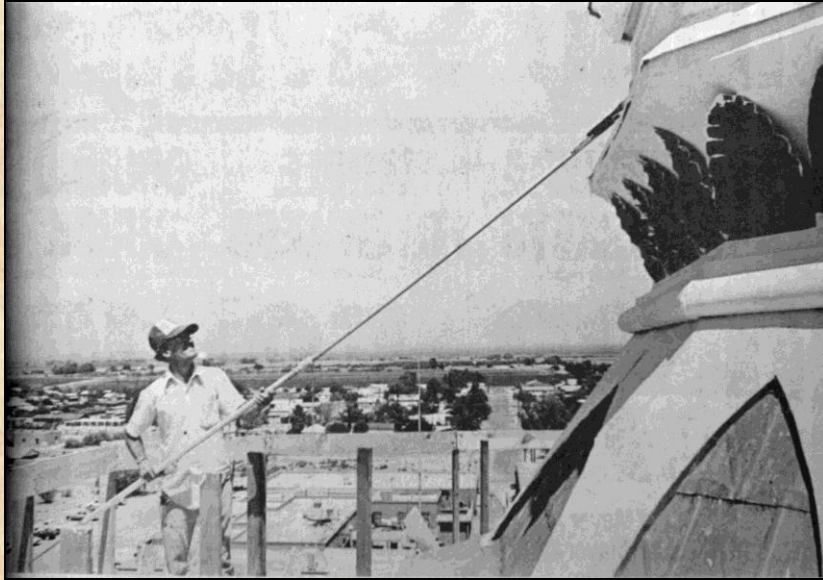


- **1934** – McFarland is elected Pinal county Superior Court Justice. He serves until 1940.
- **1940** – McFarland is elected to the U.S. Senate, where he authors the “G.I. Bill”.
- **1943** – Prisoners are moved out of the jail of the courthouse into a new county jail.
- **1946** – James M. Creighton, Architect of the 1891 Courthouse, dies.
- **1953** – The Pinal County Board of Supervisors vote to tear down the cupola, as its weight was causing the building to sag. County residents protest this action and the cupola is saved.
- **1955** - McFarland is elected Governor of Arizona.
- **1961** – Third Pinal county Courthouse is opened, consisting of some 30,000 square feet.
- **1964** – McFarland is chosen Associate Justice of Arizona Supreme Court. He is elevated to Chief Justice in 1968.
- **1975** – The 3rd addition to the second courthouse is constructed and spans the entire length of the north side of the building.



National Register of Historic Places August 2, 1978



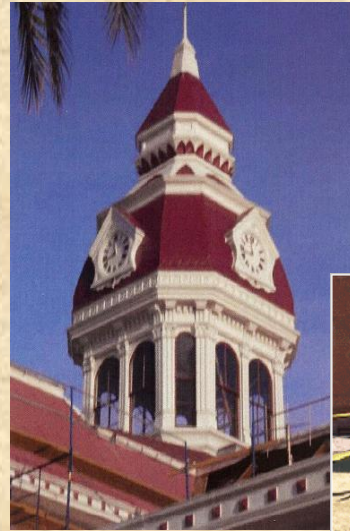


1891 Pinal County Courthouse

Repainting project: Circa 1981

Courtesy of Casa Grande Valley Newspapers, Inc.

- **1982** – The 4th addition is completed on the southeast side of the courthouse. The building, which had 15,00 square feet when first constructed, is now 24,000 square feet.
- **Late 1990s** – Pinal County board of Supervisors researches the cost of restoring the courthouse. A building assessment report concludes the cost of fully repairing the courthouse would be \$3 million.
- **2002** – First construction grant to repair the courthouse is secured from the State Park Heritage Fund. This grant of nearly \$100,000 with matching funds from Pinal County was used to repair the clock tower.
- **May 19, 2004** – The fourth and current Pinal County Courthouse is dedicated. The five story building cost \$26 million and provides the county with 145,000 sf of space. While the Second Pinal County Courthouse had one courtroom for the one county judge, the new courthouse consists of seven courtrooms for nine judges. This increase in judgeships alone shows the growth of the county over the last 130 years as does the increase of the number of county employees. Starting with less than 20 employees, Pinal County currently employs about 2,400 people in offices throughout the county.



John Swearengin, Florence local historian and storyteller died at 91 prior to the Board of Supervisors awarding the funds to complete the renovation of the 1891 Courthouse.

John held many jobs in his lifetime but it was when he was the first manager of McFarland State Park in the latter 1970s when he discovered his love for history.

He was active in local events to include the Tour of Historic Florence, held in February each year. He would entertain the crowds with his stories of early Florence. "It was a rough place, with 28 saloons and only one church to serve a population of less than 800. There was a lot of drinking and fighting going on. People got killed very casually." He said that Florence was a lot like Tombstone, except the latter had Wyatt Earp. "Both boomed while the silver lasted."

John wrote 2 books on local history, from historic figures like Pearl Hart and Pauline Cushman to lesser-known local legends that make for an entertaining read. The books are for sale at McFarland State Historic Park.

The town of Florence declared his 90th birthday on Dec, 3, 2009 "Johnny Swearengin Day."



JOHN SWEARENGIN
LOCAL HISTORIAN



Taking The 19th Century Building Into The 21st Century



There are 3 aspects of this courthouse that will make an immediate impression on people:

- One is the grand staircase at the entrance of the building. People will notice it and the high ceilings when they walk into the courthouse.
- Next is the complete rebuilding of the ceremonial courtroom on the second floor.
- Finally the new Board of Supervisors hearing room will be much larger. The seating capacity will grow to 126 people, nearly double what the current hearing room in Building A holds.
- Some of the original interior highlights will be kept for all to admire. The original brick in the Supervisors' hearing room will be exposed. Windows from the old jail cells, complete with bars, will be on display as well.



1891 SECOND PINAL COUNTY COURTHOUSE

PROJECT GOALS

The goal is to restore/rehabilitate/renovate the 1891 Second Pinal County Courthouse and building additions in accordance with The Secretary of the Interior Standards for adaptive use by Pinal County. The end result will be the preservation of an irreplaceable historical resource for future generations.



PROJECT SCOPE

Rehabilitation of the entire building including the 1917, 1933, 1975, and 1983 additions.

Interior improvements include:

- Rehabilitating and restoration of the historically significant primary spaces
- Renovation of the less significant spaces
- Installation of new mechanical, electrical, and fire sprinkler systems
- Design of new elevator system
- Reinforcement of floors
- Design of Board of Supervisors Hearing Room, meeting rooms, offices and accessible restrooms.

Exterior improvements include:

- Rehabilitation of the brick and mortar, metal entablatures, metal door and window surrounds, wood windows (at ceremonial courtroom only) and other miscellaneous improvements.
- Wood window sashes in all other locations will be replicated while the original wood casings, moldings, and similar components will be restored in place.



- Non-original metal entablatures at the latter building additions will be removed.

Site improvements include:

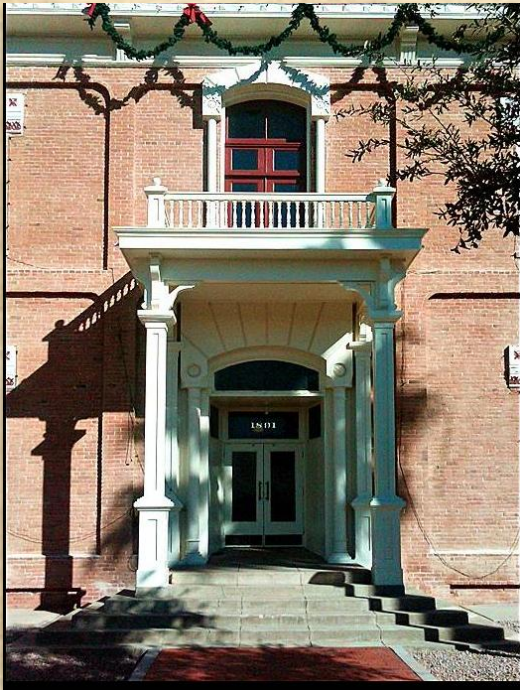
- Design of ADA sidewalks, new underground utilities, a mechanical yard, landscaping and irrigation systems and signage.



PREVIOUS RESTORATIONS



LET'S TAKE A TOUR OF THE COURTHOUSE PRIOR TO THE 2011 RESTORATION



"The inevitable challenge to rehabilitate / renovate the 1891 Second Pinal County Courthouse into a vibrant, useful facility will require determination, conviction, and a sense of obligation to future generations."
~ Swan Architects, Inc.

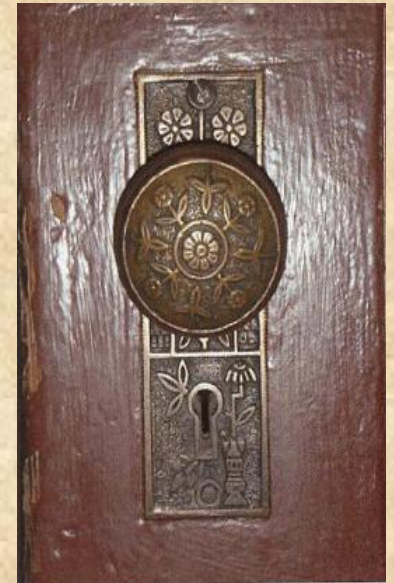




Original metal ceiling/border in
1891 Courthouse



Early hardware
at 1917 addition



Original hardware
at 1891 Courthouse



Original engraved
hinge at the 1891
Courthouse



Original wood door and transom
at 1891 Courthouse



Original wood door
trim at 1891
Courthouse



Original Wood Plinth

Replica door at 1975 addition



Altered original wood door and transom at 1891 Courthouse



Main corridor in 1933 addition



Steel vault door at
1917 addition



Wallpaper in
1975 addition

Non-original partition in
1891 Courthouse



Gypsum drywall furring in 1975 addition





Original wood strip flooring in
the ceremonial court room



Non-original vinyl tile
and rubber base in
1891 courthouse



Rubber base applied over the
original wood base in the 1891
courthouse

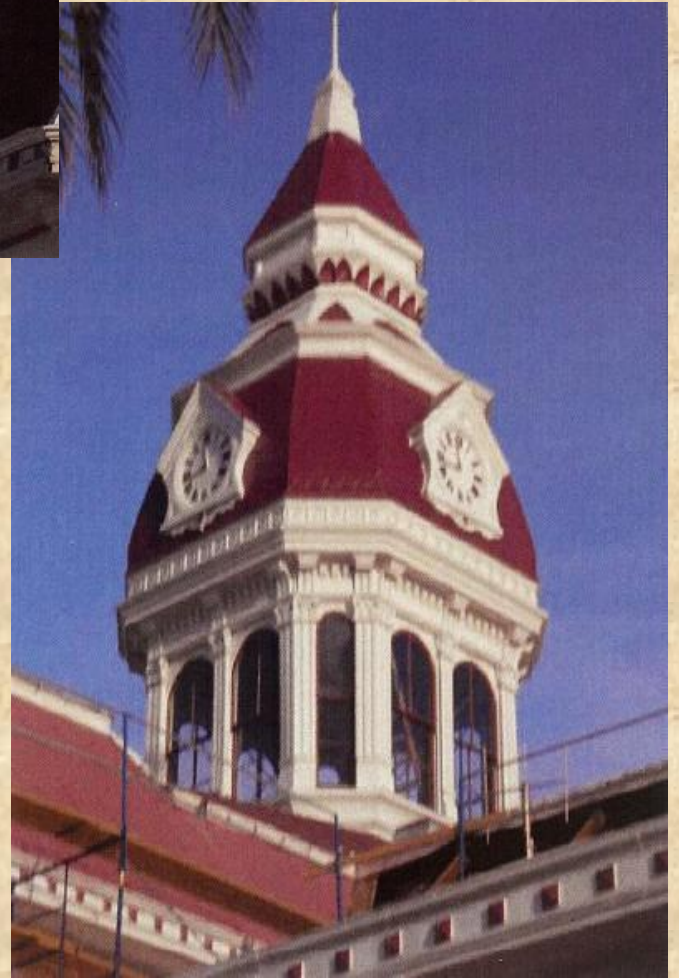


Ceramic tile in non-
original restroom

RESTORATION OF THE CLOCK TOWER



Rehabilitated sheet
metal cladding, fan
ornament and
medallion





Installing support beams



Recently installed membrane roofing
and standing seam metal roofing
above 1891 Courthouse

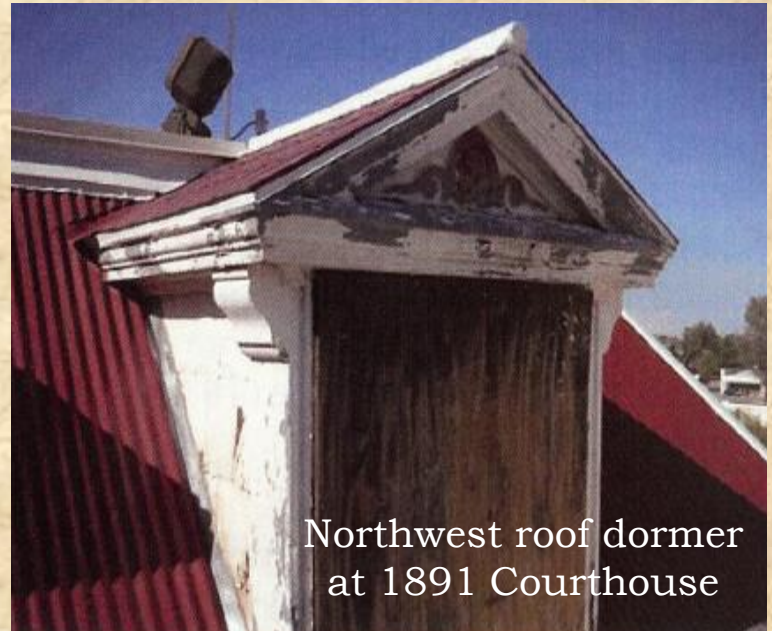
1891 COURTHOUSE CHIMNEYS



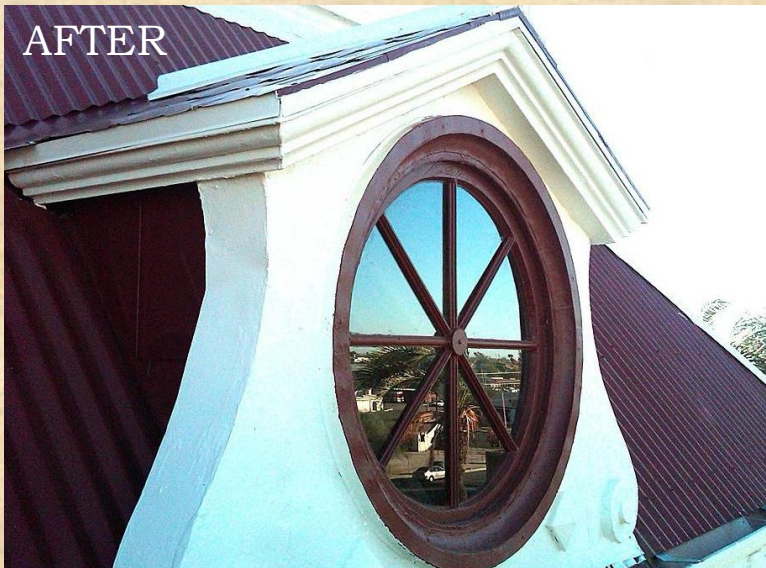
West roof dormer at 1891 Courthouse



Northwest roof dormer
at 1891 Courthouse



AFTER



AFTER

Original sheet metal bracket



Original sheet metal cornice / dentils



Original sheet metal window pediment



Original sheet metal gutter / cornice





Original 1891 roof ventilator



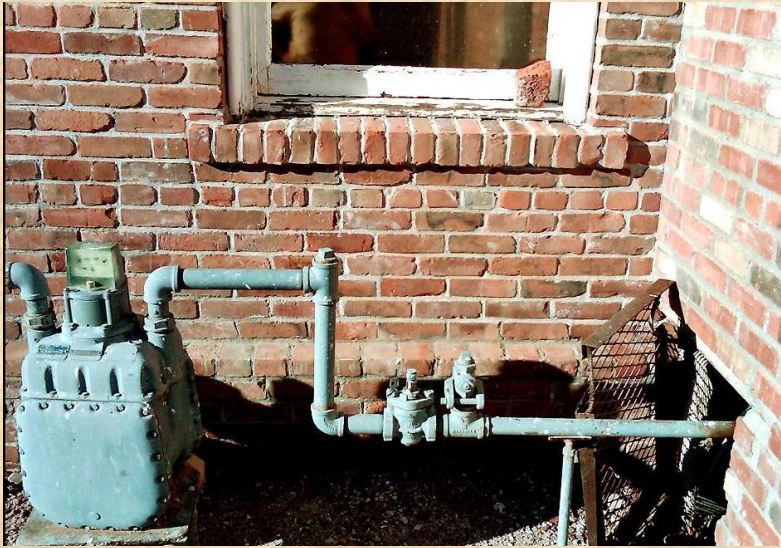
Original 1891 crawlspace vent



Original crawlspace vent /
grate 1917 addition



Crawlspace vent /
grate 1975 addition



Exterior brick work need to be restored and utilities replaced to meet current building codes.



REHABILITATION





THE COUNTY COMMITS TO THE
RENOVATION / RESTORATION
OF THE 1891 COURTHOUSE





A New Home For The Board Of Supervisors

The renovation of the 1891 Courthouse came at a time when Pinal County was in need of space for 5 supervisors, their offices and meeting chambers.

On January 12, 2011, the Board of Supervisors approved the renovation of the courthouse. This course of action replaced an earlier plan to build a 10,000 sf building to house the county's Human Resources department as well as remodeling the Administration Building "A" to accommodate two more supervisors and staff. The anticipated cost of the earlier project was \$3.2 million. The renovation of the 1891 courthouse is anticipated to cost \$6 million.



Arizona State Statute 11-211(A) requires counties to have five elected supervisors once they have a population of 175,000 or more, as determined by the US Census Bureau. Pinal County's 2010 Census population was 375,770.

1891 Courthouse Renovation Project

On October 18, 2011, the [Arizona Historical Advisory Commission](#) (AHAC) sent a letter to Pinal County announcing that the “1891 Pinal County Courthouse Renovation” project was designated as an official Arizona Centennial Legacy Project.



Official Centennial Legacy Project

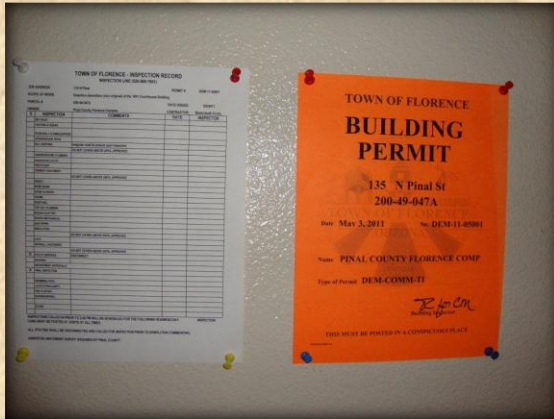


RENOVATION & CONSTRUCTION PHASE



Unique Aspects of Renovation & Adaptive Re-Use Construction

- Selective Demolition & Asbestos Abatement Concurrent with the Design Phase



Construction Phase of 1891 Courthouse Renovation Underway

January 5, 2012

Florence, AZ – With the interior demolition complete and the architectural design finalized, the next and biggest step of the renovation of the 1891 Courthouse is now underway – interior construction.

“Considering the age of this building, it will be a very sensitive project. It is not typical of our past projects where we build from the ground up. You have to plan this properly, it means taking extra care during demolition and construction but this is an exciting time,” said construction project manager Archie Carreon.

Carreon said that crews will be busy throughout most of the year getting the building ready for its 2013 debut. Work on the courthouse is scheduled to be completed by the end of November.

AND SO THE RENOVATION BEGINS.....





MOVING THE BEAN TREE

*Planted in honor of
Superior Court Judge
Robert R. Bean*

CREATING A STRUCTURALLY SOUND BUILDING

March 2012 - Portion of roof deck at northeast corner had to be replaced due to structural conditions.



Roof demolition at Room 101



Two glulam beams were brought in through a window on the east side of the courtroom and raised up above the ceiling and into the attic to further stabilize the clock tower. April 2012



1891 Courthouse Vault Time Lock Inspection Stickers

The Time Lock Inspection Stickers were retrieved from the door of the vault that was located in the 1933 addition of the 1891 Courthouse. Inspection dates range from 1912 – 1940.

Inspectors of the 1891 Courthouse, J.M. Mossman Co. Time Locks, worked for a commerce / trade company out of the Rialto Building in San Francisco California.

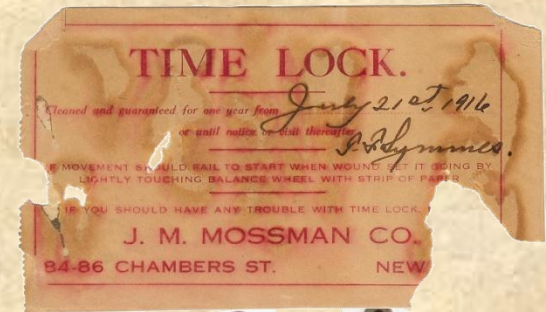
Time Locks: A part of a locking mechanism commonly found in bank vaults and other high-security containers. The time lock is a timer designed to prevent the opening of the safe or vault until it reaches the pre-set time, even if the correct combination(s) are known.

When the timer runs down, a bolt is released and the door may be opened, or more often, the right combination had to be dialed and then the door opened. Time locks are mounted on the inside of the safe's or vault's door.

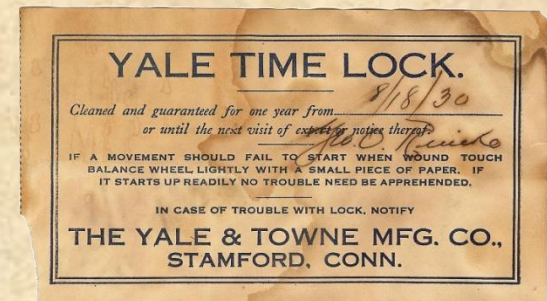
Time locks were originally created to prevent criminals from kidnapping and torturing the person(s) who knows the combination, and then using the extracted information to later burgle the safe or vault, or to stop entry by staff at unauthorized times. This was very important, since before the introduction of the timer in 1874, there was the nasty problem of bank robbers kidnapping the bank president or cashier; marching him down to the bank at night and forcing him to open the door.

The very early time locks had a combination bypass which could override the time lock. This "secret" combination was known only to the time lock company and was not to be disclosed to bank personnel.

One of five Mossman Time Lock Inspection Stickers dating between July 1911 to December 1919.



Safe Keys by J.M. Mossman



One of fifteen Yale & Towne Mfg. Co. Time Lock Inspection Stickers dating between July 1921 to October 1940.

MOVING THE SAFE

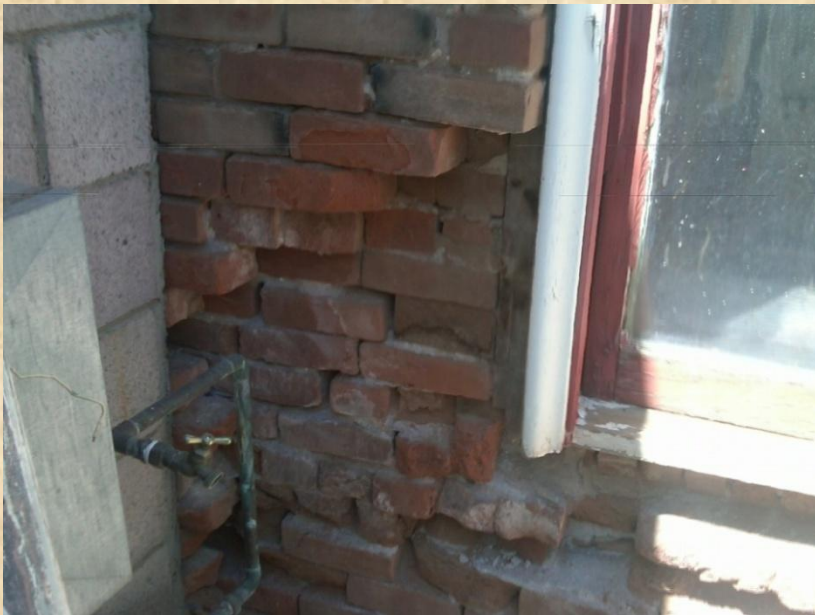


The Sheriff's Office offered to take the 30 year old safe that had been in the Treasurer's Office in the 1975 Courthouse addition. A moving company was hired and the Sheriff's Office helps move the safe from the Courthouse to Sheriff's Office at Jason Lopez Circle.



WINDOW TREATMENTS AND BRICK WORK





March 2012



Interior Brick Repair – May 2012

April 2012



New window sashes ready to install June 2012





July 2012



October 2012



August 2012



September 2012



GIVING THE COURTHOUSE A NEW LIFE



SIGNS OF PROGRESS

June 2012

- Bean Tree Relocated
- Ground Stripped
- Scaffolding goes up
- Old windows come out
- Additional beams go in for clock tower support
- Staircase restoration begins
- Structural supports go in
- Internal brick work exposed
- Internal wall partitions in progress
- Old jail windows exposed
- New windows go in
- New electrical and plumbing installation begins
- Elevator enclosure structural support work begins



March 2012





March 2012





March 2012





Exterior Face of building completed May 2012



Exterior West Entry: graded and sashes installed – July 2012



North face of exterior
June 2012



Exterior southeast
corner
June 2012



South Face prior to
scaffold removal
July 2012

SIDEWALKS, LIGHTING AND IRRIGATION LINES



August 2012



September 2012

Exterior - West Face of Building



September/October 2012





The Dream Is Becoming Reality



MEETING TODAY'S BUILDING CODES



CHALLENGES



- BUILDING CODES
- BUILDING SYSTEMS
- ENERGY EFFICIENCY
- ACCESSIBILITY

swan architects, inc.



Before

Utilities are brought up to current building codes.



After



New fiber optics



September/October 2012





Base layer of roofing at south lower roof - April 2012



Lighting installed and turned on at 2nd floor. September 2012



June 2012

The roof, in much need of repair, is complete and ready to withstand the sun and monsoons.

Lighting fixtures varied throughout the building. Fluorescents, wall sconces, chandeliers, recessed and track lighting are a few types of lighting fixtures that can be found inside. The outside of the building is lit by landscape accent lighting and path lights along the sidewalks.





New Sewer tie-in and water connection
February 2012



New APS feeder conduit
February 2012



May 2012



August 2012

Setting equipment in Mechanical Yard



Under floor Mechanical
Systems - February 2012

Attic HVAC equipment in
service September 2012

August/October 2012



August/September 2012





THE INTERIOR COMES TO LIFE AGAIN



HALLWAY IMPROVEMENTS



North hallway framed and
sound board installed
June 2012



1st Floor foyer and
halls stripped and
painted
September 2012



1st floor rotunda walls
patched
August 2012



2nd floor foyer and rotunda
painted and flooring installed.
October 2012



North Entrance - 1st Floor



November 2012



1st Floor
Interior Hall



November 2012

The 1st floor of the 1891 Courthouse has well-lit interior hallways leading to the Board Hearing Room, the Multi-Purpose Rooms, Offices and washrooms.

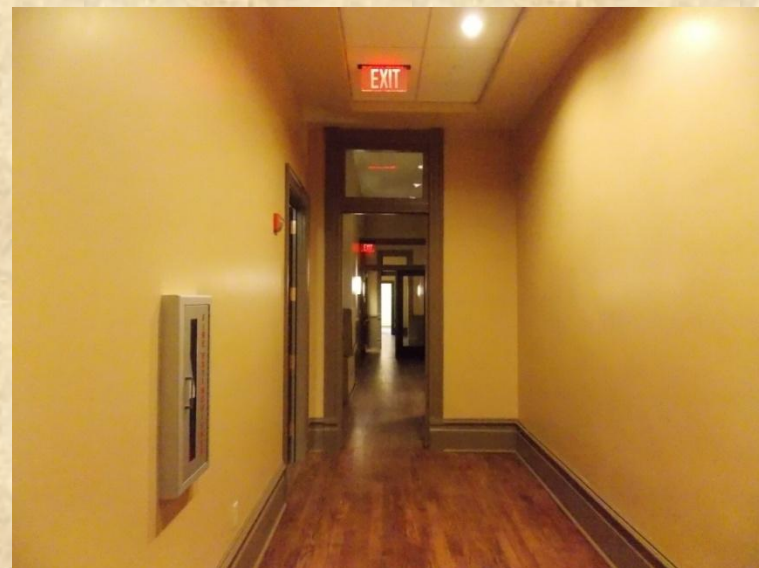
An elevator, located to the right of the grand staircase, allow visitors the option of riding to the second floor and meets codes for accessibility.



1st Floor Hallways



2nd Floor Elevator





MODERNIZING PLUMBING & WASHROOMS



WASHROOM RENOVATIONS



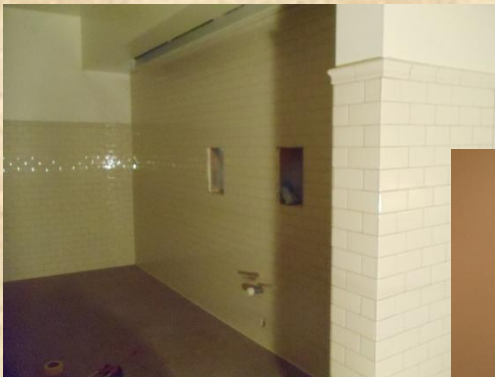
Infill of Masonry at Restrooms
March 2012



Lintel and Infill at Janitor Room
March 2012

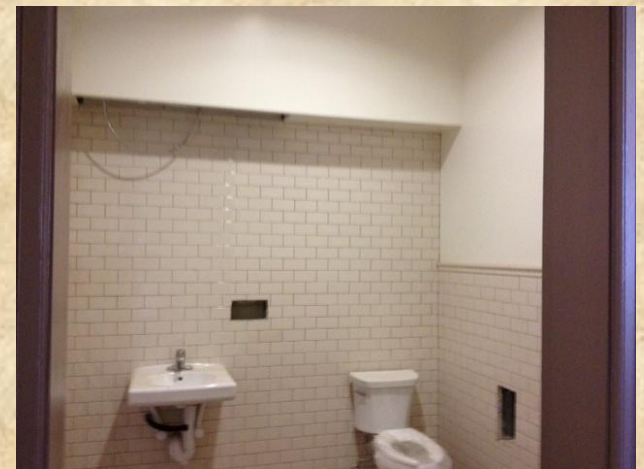


Plumbing rough-in at large 1st
Floor Restrooms April 2012



Ceramic tile at 1st floor
restrooms.

August 2012



Interior restrooms complete. Lighting
in place. September 2012

November 2012
1st & 2nd Floor Washrooms Completed



Above: 2nd floor
washroom



The washrooms on both floors
have been renovated and brought
up to code. Each washroom and
the water fountains are handicap
accessible.



Right: 1st floor
washroom



OFFICES & INTERIOR SPACES



EMPLOYEE WORK SPACE

September 2012



The employees who work within the 1891 Courthouse will have conference rooms available for their use.

This conference room seats 10 and has a white board and flat screen for presentations.

The bookcase was renovated to accent this conference room's curved wall.

November 2012





Cabinetry
installed
throughout
break rooms
September
2012

Final touches are done and furniture arrives
November 2012



This old vault was left intact in this office.

Offices

Some of the offices vary in size because of the original configuration of the structure and the additions.



November 2012

Offices



The windows on the north interior brick wall of the 1st floor have been left exposed to accent the office space.



Completed November 2012

Offices

November 2012

Offices on the 2nd floor are completed. The ceiling in one office is recessed and has a unique pattern due to the rotunda.



Offices

November 2012

Blinds have been installed in the windows to reduce the effects of the sun and heat.





THE GALLERY HISTORICAL SPACE



THE GALLERY

These rooms were once home to the Assessor before the building was vacated.



August 2012



September 2012



October 2012



November 2012



THE GALLERY

November 2012

The Gallery will display a variety of items once used by the county to conduct business.

Historical photographs, maps, newspapers and artifacts will be available for viewing.

One of the rooms still has an original vault door intact.

The 1891 Pinal County Courthouse will remain a focal point in Florence and a place to visit for generations to come.



"The inevitable challenge to rehabilitate / renovate the 1891 Second Pinal County Courthouse into a vibrant, useful facility will require determination, conviction, and a sense of obligation to future generations."

~ Swan Architects, Inc.



COMMUNITY MEETING & TRAINING ROOMS



MEETING ROOMS

The 1891 Courthouse went through major reconstruction that included removing walls and reconfiguring the interior to accommodate the need for additional meeting rooms. There are 3 large Multi-Purpose Rooms on the 1st floor that will be available to the public.

The South Multi-Purpose Room

The North Multi-Purpose Room

The East Multi-Purpose Room

The Board of Supervisors Hearing Room and the Executive Session Hearing Room are also located on the 1st Floor. The Ceremonial Room, located on the 2nd Floor, is the original courtroom.



Mechanical openings – March 2012

Framing and roof structure at Room 101 April 2012



AHU in place. Framing soffits in place.
May 2012



SOUTH MULTI-PURPOSE ROOM



September 2012



October 2012



November 2012



SOUTH MULTI-PURPOSE ROOM

Completed November 2012

This room is located to the south of the Board of Supervisors Hearing Room. It will be used as an overflow area when Board meetings draw a large crowd.



This room will seat 48 with a maximum occupancy of 74 and is accessible from an exterior door on the south side of the building. The occupants may access the interior of the courthouse through the “exit” on the west side. The Board Room is north of the interior brick wall.



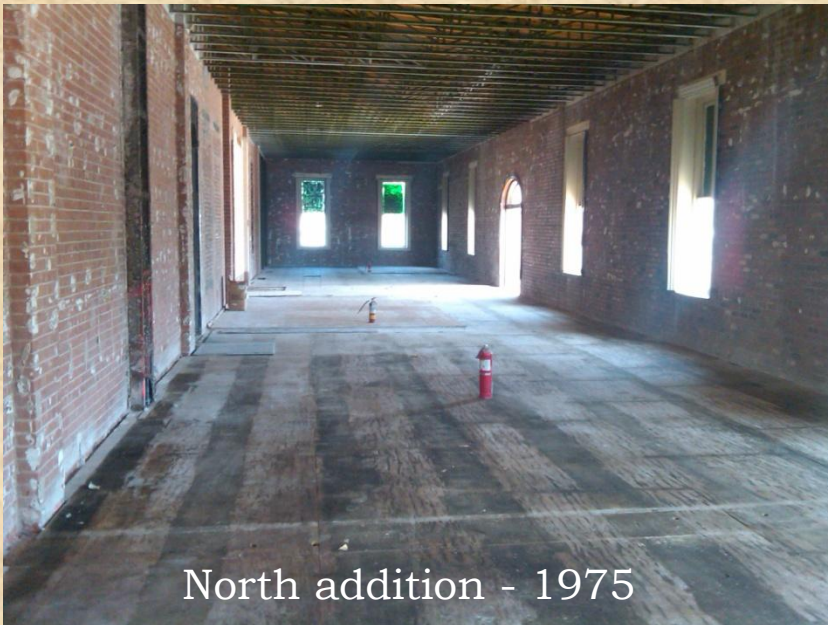


THE NORTH ADDITION





Old vaults



North addition - 1975



THE NORTH MULTI-PURPOSE ROOM



The north side extension was added in 1975. It was home to the Treasurer until the building was vacated.

After demolition of interior walls and removal of the safe, construction of new walls began to take shape.

The North Multi-Purpose Room is one of the three meeting rooms available for public use.



THE NORTH MULTI-PURPOSE ROOM

The North Multi-Purpose Room, accessible from the north entrance of the building, can seat 22, classroom style, and has a large flat screen.



Completed November 2012



THE EAST MULTIPURPOSE ROOM



THE EAST MULTI-PURPOSE ROOM

The East Multi-Purpose Room, located on the northeast corner of the courthouse can be converted into two rooms separated by a soundproof divider that have white boards attached to each side of the divider. There are two separate entrances, both accessing the outside of the building. The East Multi-Purpose Room can seat 30, classroom style, and has a large flat screen with data ports.



Multipurpose Room divider
installed - August 2012





The East Multi-Purpose Room
Completed November 2012



BOARD OF SUPERVISORS' HEARING ROOM



BOARD OF SUPERVISORS HEARING ROOM



Demolition at Board Hearing Room
January 2012

Work on the new Board Hearing Room in progress.

- Some of the brick will remain exposed as will portions of the support beams.
- The jail windows will remain exposed.



Jail windows in Board Hearing Room
are exposed. February 2012



March 2012

BOARD OF SUPERVISORS HEARING ROOM

Once the demolition was completed, the new Gluelam Beams were installed and stained. This helped support the second floor where the Ceremonial Courtroom is located. The wall which will be the backdrop for the Board was completed and ready to paint.

The doors, old jail windows, brickwork and existing ceiling will be focal points in the Hearing Room.



New Gluelam Beams installed – February 2012



Beams stained and wall in place – June 2012



Board Room ready to paint – August 2012



*Board of Supervisors
Hearing Room*

August 2012



September 2012



September 2012

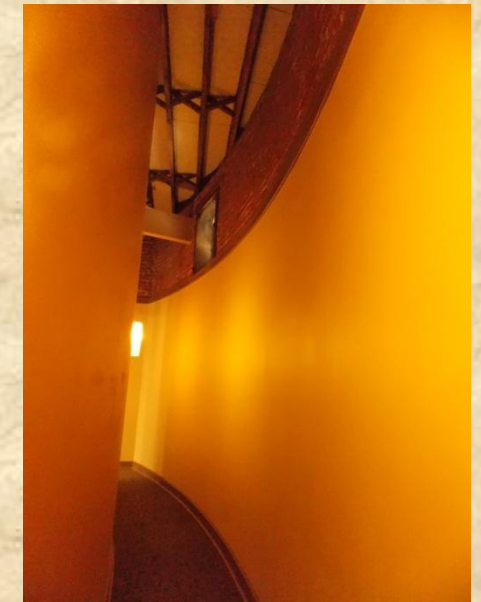
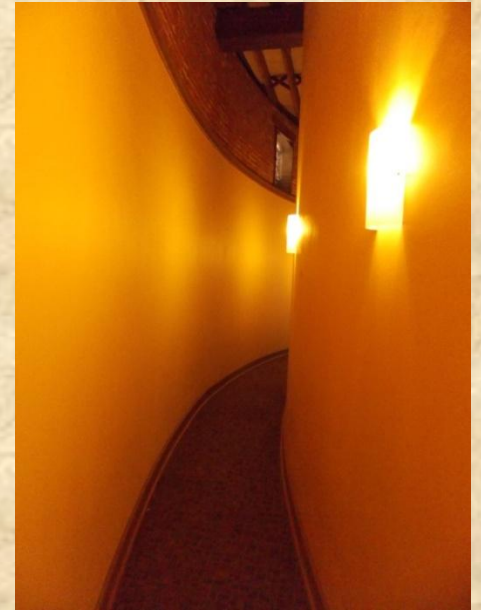
Board of Supervisors Hearing Room

Sprinkler system, lights, and sound boards are installed.



October 2012







Board of Supervisors Hearing Room

November 2012

The new Board of Supervisors Hearing Room was completed in November 2012. The room will seat 110 and is handicap accessible. Maximum capacity is 119. There are video screens mounted on the walls near the front of the room. The old jail windows and some of the original brick work are exposed as a testament to the history of this building.





The entrance to the Board Room is directly behind the grand staircase.

Board of Supervisors Executive Session Hearing Room

November 2012

The Board of Supervisors sometimes has to hold Executive Sessions to obtain legal advice or discuss limited topics that are confidential. Executive Sessions are not open to the public. Their meeting room is to the south of the Board of Supervisors Hearing Room. This room seats 12 with the maximum occupancy of 38 and is equipped with a large flat screen, a white board, teleconference capability and data ports.





RESTORING WOODWORK, CEILING AND FLOORS





RESTORATION OF THE DOORS



September/October 2012



October 2012



July 2012

CEILING, WALLS AND FLOORS



July 2012



September 2012



August 2012

Water damage from years roof leaks took its toll on the courthouse.

Ceiling tiles needed to be replaced. Walls were stripped and the new hardwood floor installed.



August 2012

September 2012



October 2012





February 2012





January 2012 – after lead abatement



February 2012



March 2012



Lead paint removed from stairs.

May 2012



THE FOYER

November 2012



Hardwood floors are installed and stained.

The original wood stairs are left intact.

The banisters are refinished and painted. The grand staircase will still be a major focal point of this building.

The wainscot and walls are painted accent colors.

Some of the ceiling tins were replaced. Most are still original.



THE ROTUNDA



October 2012



October/November 2012





THE GRAND STAIRCASE

November 2012

Grand Staircase and the floors, ceiling, and walls on both floors have been painted and stained.

All lighting has been installed. Offices are carpeted.







November 2012





Grand Staircase
Completed December 2012

"The inevitable challenge to rehabilitate / renovate the 1891 Second Pinal County Courthouse into a vibrant, useful facility will require determination, conviction, and a sense of obligation to future generations."
~ Swan Architects, Inc.

Professional photographs taken in December 2012 reveal the warm feeling that people have felt when they walk through the front doors of the 1891 Pinal County Courthouse. This grand staircase captures the hearts of everyone who sees it. Many have remarked over the course of years about their memories of this beautiful building.





CEREMONIAL COURTROOM



*CEREMONIAL COURTROOM
RENOVATION*



Judge's Bench at Historic Courtroom – February 2012



August 2012



Student tour - April 2012



Ceremonial Courtroom
painted September 2012



October 2012



Ceiling tiles and flooring are installed.



Lighting has been installed.
The final touches are made to railing.

November 2012



The judge's bench is restored and has data ports installed.

November 2012

CEREMONIAL COURTROOM



November 2012

Furniture is in place and ready for public ceremonies. This room, on the 2nd floor, was the original courtroom where Pearl Hart's trial was held.

The Ceremonial Courthouse will seat 84 people with the maximum capacity of 98. Data ports have been installed at the judge's bench.

CEREMONIAL COURTROOM





LANDSCAPE AND LIGHTS







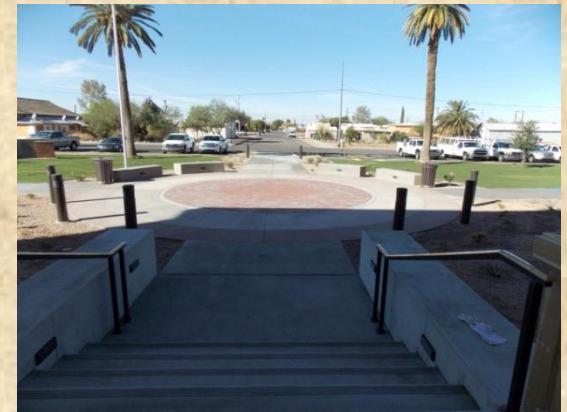
November 2012

- Trees, plants, shrubs, and sod are planted.
- Lighting is completed.
- Irrigation system is functioning.
- Final touches on woodwork and electrical being completed.
- Furniture arrives.
- IT installs digital and telephonic devices.
- The courthouse lights provide a warm glow in the evening.

This project nears completion.



Brick Pavers Become A Focal Point



The 1891 Pinal county Courthouse Brick Pavers Project was established as a fund raiser for the restoration of the courthouse.

The bricks found in the circle showcase messages from those who have donated to the fund raiser.





REFLECTING BACK





In 1891, the cost of the courthouse construction was \$29,000.

The jail was an additional \$5,765.

Upon opening in 1891, the courthouse contained offices for:

Assessor

Recorder

Treasurer

Board of Supervisors



Dedication/Opening of the courthouse after renovation is scheduled for January 3, 2013 at a renovation cost of \$6,675,000.

The 1891 Courthouse will once again become a public building containing offices for:

The Board of Supervisors and related offices.

CONCEPTUAL RENDERINGS



swan architects, inc.

CONCEPTUAL RENDERINGS



swan architects, inc.





1891 HISTORIC SECOND PINAL COUNTY COURTHOUSE

TAKING THE 19TH CENTURY BUILDING INTO THE 21ST CENTURY



THE FINAL REVEAL





November – December 2012

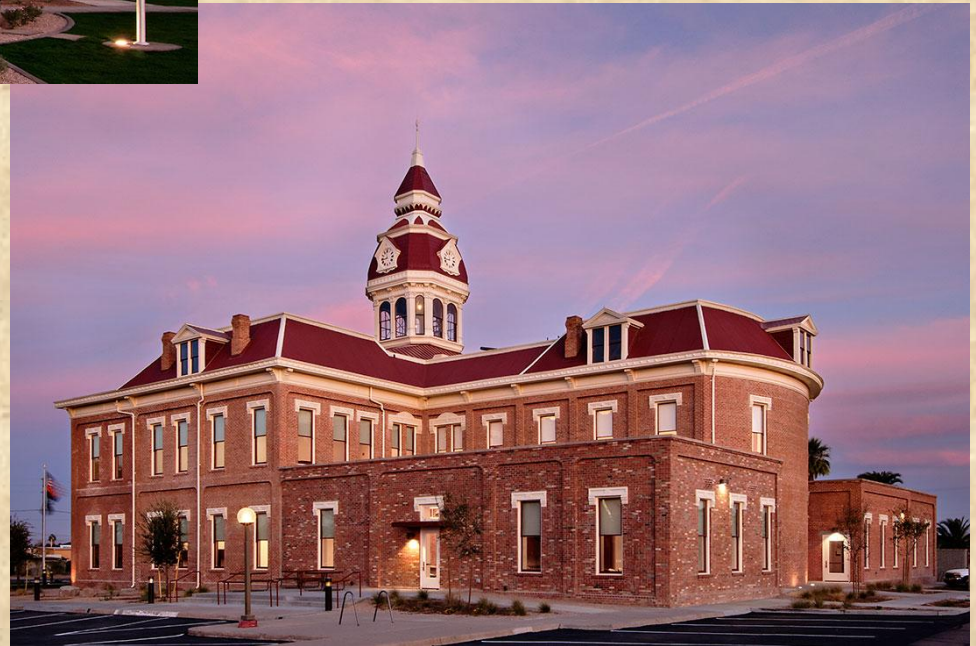


The Pride of Pinal County

The 1891 Pinal County Courthouse is finally complete and breathes new life for future generations to enjoy. History has been made here. Creating new memories has just begun.

"The inevitable challenge to rehabilitate / renovate the 1891 Second Pinal County Courthouse into a vibrant, useful facility will require determination, conviction, and a sense of obligation to future generations."

~ Swan Architects, Inc.



The Board of Supervisors
1st Session in the 1891 Courthouse
After Completion of the Renovation

The Ribbon Cutting Ceremony
December 19, 2012



ACKNOWLEDGEMENTS



PROJECT WEBSITE

Follow progress of project:

- Updates on the status of this project
- Photos and video uploads
- Provides historical information
- Source for public involvement through memoirs and brick paver project
- Announcement of Dedication and Opening

www.pinalcountyz.gov

1891 Courthouse Renovation Project



A historical kind of county

Home Residents Visitors Business Government Economic Development February 8, 2012 - 1:57 pm

Home > Departments > Public Works > 1891 Courthouse Renovation Project > Home

Search:

All County Departments

1891 Courthouse Renovation Project

Project Schedule

Restoration Project

New Home For Board

Our Legacy

Brick Paver Project

Officially Designated as a Centennial Legacy Project by the Arizona Historical Advisory Commission



Courthouse Videos



Press Releases



Memoirs



1891 Courthouse Renovation Project

"The inevitable challenge to rehabilitate / renovate the 1891 Second Pinal County Courthouse into a vibrant, useful facility will require determination, conviction, and a sense of obligation to future generations."
~ Swan Architects, Inc.



ARIZONA CENTENNIAL 1912-2012
AHAC CENTENNIAL LEGACY PROJECT

History

The Second Pinal County Courthouse was built in 1890-91 replacing the First Pinal County Courthouse which was built in 1877-78. Mr. James Miller Creighton was selected by the County Board of Supervisors to design and supervise the construction of the new courthouse. Mr. Creighton is considered the founder of the architectural profession in Arizona. He designed many houses, schools, and other commercial buildings throughout Arizona. His accomplishments were remarkable for a person that had no formal architectural education. The Second Pinal County Courthouse was constructed by A.J. Doran in association with T.A. Adams for a total cost, including the jail, of \$34,765. The courthouse contained a sheriff's office, jail, courtroom, and offices for the assessor, treasurer, recorder, and supervisors. In 1899 Pearl Hart, Arizona's best known woman outlaw was held in the Pinal Courthouse Jail for robbing the Florence-Globe Stage. [Learn more...](#)



click to enlarge

Years of Restoration and the Final Reveal

The 1891 Second Pinal County Courthouse is a noteworthy example of the American-Victorian style and of nineteenth century construction technology on the Southwestern Frontier. The courthouse was listed on the National Register of Historic Places on August 2, 1978. Until 2003, it remained the oldest public building still in use and is one of Arizona's most irreplaceable historic properties.

The courthouse has gone through years of construction to bring it to the total net area of 22,449 net square feet. In 1917 the first and second floor additions were completed adding 840 net square feet to each floor. The addition completed in 1933 added another 2,113 net square feet to the building. In 1975 another 2,680 net square feet was added. Then again in 1983 another 2,094 net square feet was added. Restoration of the clock tower, roof. [Learn more...](#)



click to enlarge

New home for the Board of Supervisors

As we move into the 21st century and celebrate Arizona's 100th birthday we can reflect on the history of Pinal County and those who have served as the Board of Supervisors. The renovation of the 1891 Courthouse will provide additional office space to accommodate five (5) supervisors and related offices.

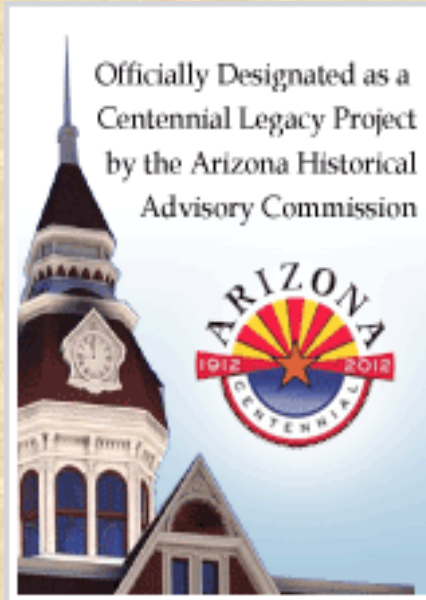


Website design: Cheri Webb

1891 Pinal County Courthouse Project



swan architects, inc.



Special thanks to:

- ❖ ***Pinal County Board of Supervisors***
- ❖ ***Arizona Centennial Committee***
- ❖ ***Arizona Historical Advisory Commission***
- ❖ ***State of Arizona***
- ❖ ***Town of Florence AZ***
- ❖ ***Main Street Projects***
- ❖ ***Ernie Feliz***

Get Involved....



The 1891 Pinal county Courthouse Brick Pavers Project was established as a fund raiser for the restoration of the courthouse. It continues to be a great success. If you would like to be a part of the 1891 Courthouse Legacy, you may purchase a brick for \$50 each and write a message to be engraved on it. The Brick Paver Project Donation Form can be found on the 1891 Courthouse Project website @ www.pinalcountyaz.gov

Become a part of Pinal County's Legacy.

Share your story about the courthouse by submitting your memoir online at: www.pinalcountyaz.gov



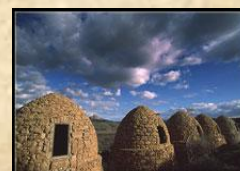
And come visit the 1891 Courthouse and Gallery

We'll be open for business in January 2013, so plan a day to visit this historical landmark.



VISIT FLORENCE AZ

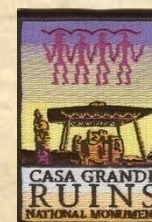
www.visitflorenceaz.com/outdoorguide.shtml



Coke Ovens East of Florence



Petroglyphs: Cottonwood Canyon Rd



Coolidge AZ



Crossing Arizona from New Mexico to Utah

Before



1891 Pinal County Courthouse





And Our Legacy Lives On

1891 Pinal County Courthouse



"Remove not the ancient landmark, which thy fathers have set." Proverbs 22:28